

# FOR LEASE

## INDUSTRIAL - 4,800 Sq. Ft.

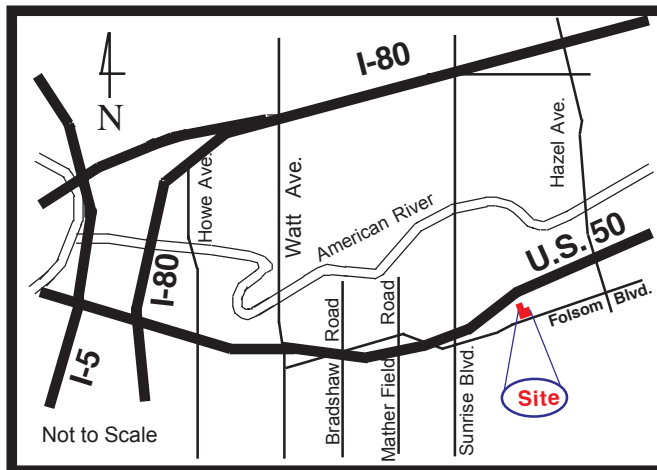


11347 "D" Folsom Boulevard  
Rancho Cordova, California

### FEATURES:

- \* 4,800 Total Square Feet
- \* 1,360 Sq. Ft. Office and Restrooms
- \* (1) 12' x 14' and (1) 12' x 12' Grade Level Door
- \* 18' to 20' Clear Height
- \* Fire Sprinklered
- \* Zoned M-1 with a Use Permit for Sports Related Uses
- \* Located in the 15 Acre Sacramento SportsPlex
- \* \$.65/sf/mo., NNN

### LOCATION MAP:



**BOULDIN & ENGLISH**  
COMMERCIAL REAL ESTATE

10411 Old Placerville Road, Suite #215,  
Sacramento, California 95827

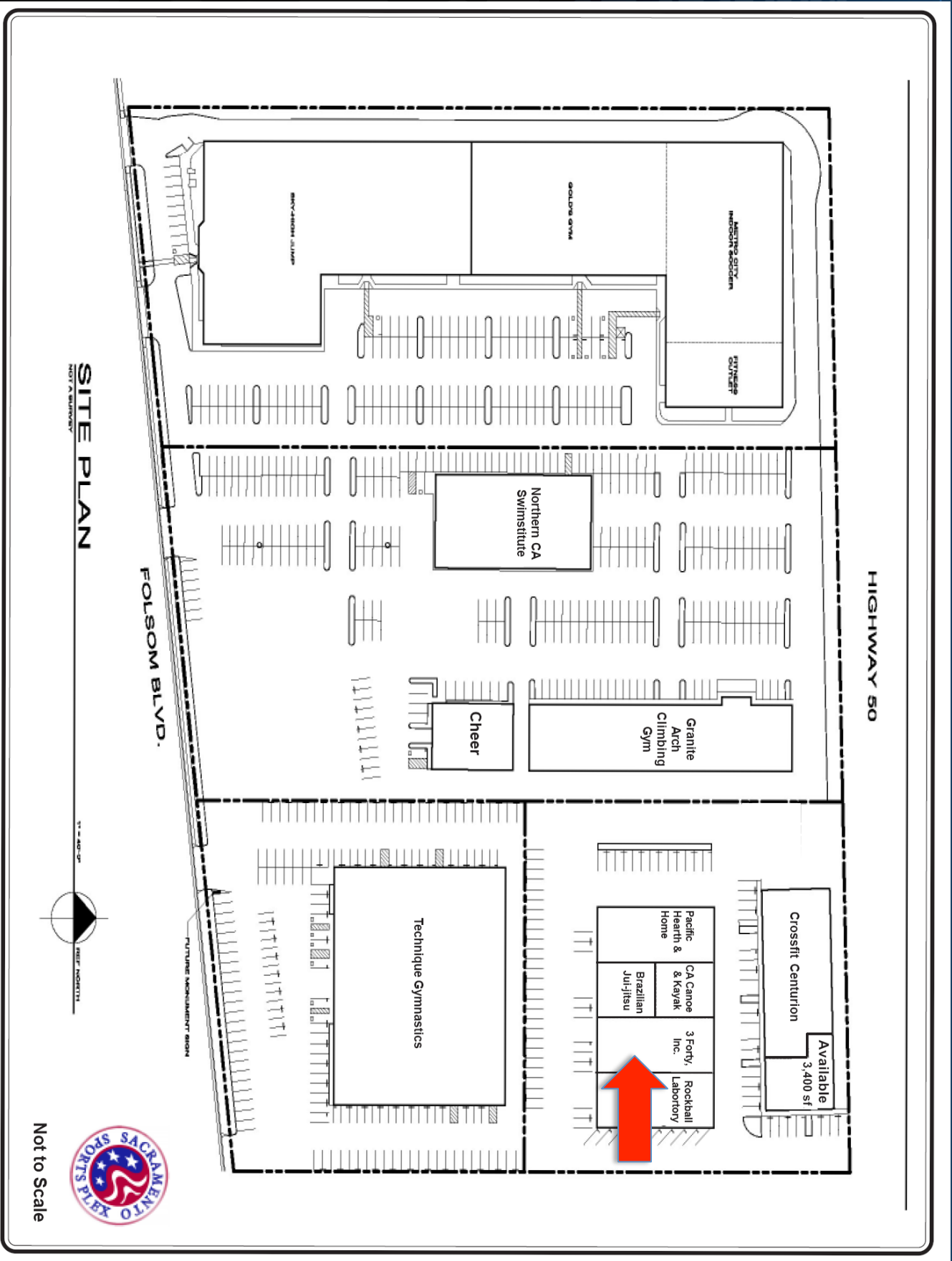
For Further Information Contact:

**BILL F. BOULDIN / GLENN L. ENGLISH**  
**Exclusive Agents**

**(916) 361-8000**

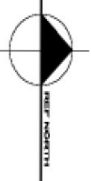
**Fax: (916) 361-2269**

# 11349 FOLSOM BOULEVARD



SITE PLAN  
NOT A SURVEY

1" = 40'-0"



REF: NORTH



Not to Scale

# 11347 Folsom Boulevard

